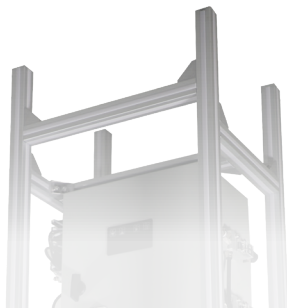
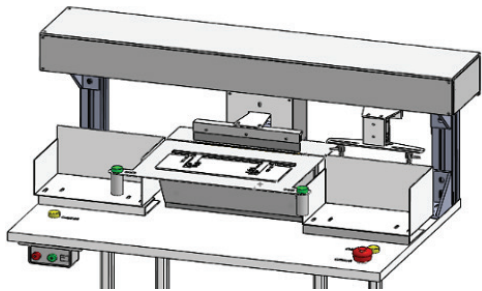


qonvolv

WS006A
Auto Sleeve-Placket Pressing Machine



For setting up together with
WS005A to further enhance
sleeve-placket setting efficiency.










- Automats pressing of sleeve-plackets before setting with WS005A. reduce preparation workload.
- Simplified operation only requiring operators to place sleeve-placket panel at guided position. Folding, pressing, and stacking of finished panels are all performed automatically.
- One set of WS006A can supply for 2-3 sets of WS005A panel input.
- Equipped with multiple size marks for easy setting of pressing guide for wide range of placket specifications.

APPLICATIONS

Styles

Square or triangle doghouse

SPECIFICATIONS

	Compressed Air Requirement (Mpa) 0.5		Dimensions (mm) L 775 x W 445x H 1,185
	Changeover Time (m) 1		Power (W) 750
	Output (pairs/ hr) 250		Power Supply (V) AC 220 (50Hz)
			Weight (kg) 55

qonvolv

Quaternion Hong Kong Limited
13/F, Harbour Center, 25 Harbour Road
Wanchai, Hong Kong

| +852 2811 8077
| cs@qonvolv.com
| www.qonvolv.com