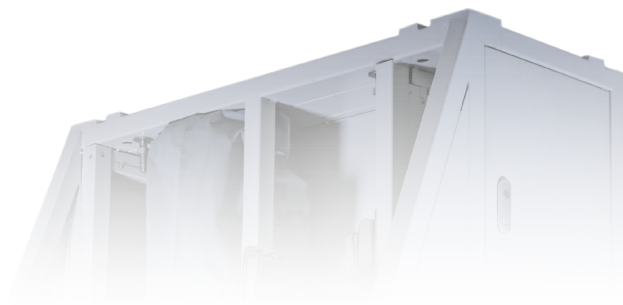
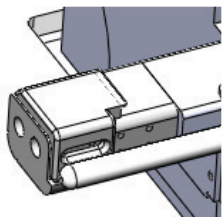


qonvolv

KA002A
Rib Cuff Attaching Machine



Patent Granted



Sewing Guide Design



Rib Cuff Before Attaching



Sleeve Before Attaching



Finished Sleeve after Attaching Rib Cuff

For attaching rib cuffs on knit shirts and pants. Reducing sewing operators' skill dependency through digitally controlled operations..

- Simplified operation only requiring operators to place cuff and sleeve panel according to sewing guide positioning. Eliminating training for traditional manual operations.
- Digitalized control for different styles and sizes with memory function. Enabling quick change-over through simple touch screen selection.
- Dedicated fabric edges rolling prevention device eliminating the need for manual handling during sewing.

APPLICATIONS

Styles

Rib Cuffs for Long Sleeve Shirts and Pants

Size and Dimensions

Cuff Height: 40-75mm
Cuff Width: >=65mm

Fabrications

Double Face,
French Terry, Jersey

SPECIFICATIONS



Sewing Machine Head
PEGASUS ETX5114



Dimensions (mm)
L: 1,020 x W: 695 x H: 1,200



Stitch Type
Overlock Stitch (#514)



Power (W)
2,000



Compressed Air Requirement (Mpa)
0.5



Power Supply (V)
AC 220 (50Hz)



Needle
DCx1



Max. Sewing Speed (rpm)
3,000



Changeover Time (m)
5



Weight (kg)
250



Output (pcs/ hr)
70

qonvolv

Quaternion Hong Kong Limited
13/F, Harbour Center, 25 Harbour Road
Wanchai, Hong Kong

+852 2811 8077
cs@qonvolv.com
www.qonvolv.com

REL 20220608